

Safety in difficult births

Do algorithms help?

Dr Shubha Rama Rao

DGO, MD

Head of Unit

St Martha's Hospital

Bengaluru

Why it has become difficult??

- Increasing obstetric litigation!!
 - Cerebral palsy
 - Brachial plexus injury
 - Fractures..
- Inappropriate management/negligence
- Improper communication
- Improper/inappropriate documentation

How to overcome this problem?

- Good antenatal and intra-natal care
- Identify risks
- Proper counselling
- Overcome emergencies appropriately



How Algorithm is helpful?

- Algorithm is a step by step guide, strategy, which presents core knowledge, in a structured fashion for the action to be taken in management of a patient in a situation
- It is a reliable and practical resource in day to day practice
- Helps in rapid decision making to minimise the risks of a poor outcome

Difficult birth

Fetal dystocia due to shape
size

position of the fetus

Major cause for maternal / fetal morbidity and mortality

SHOULDER DYSTOCIA

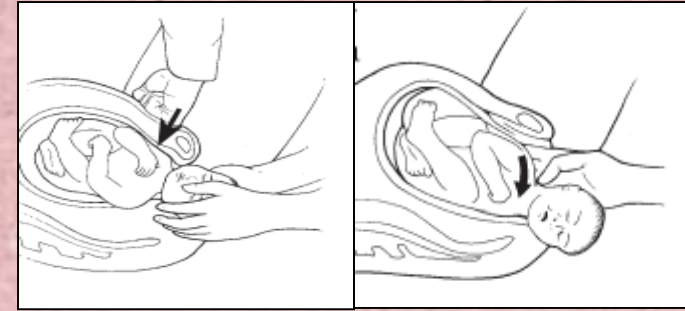
ALARMER

HELP !!!

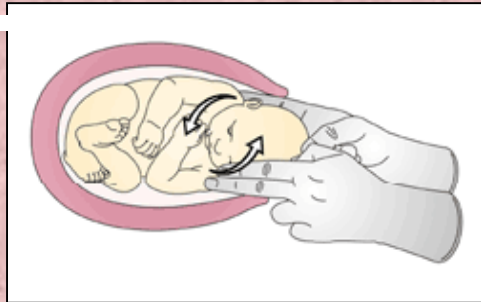
Ask for Help



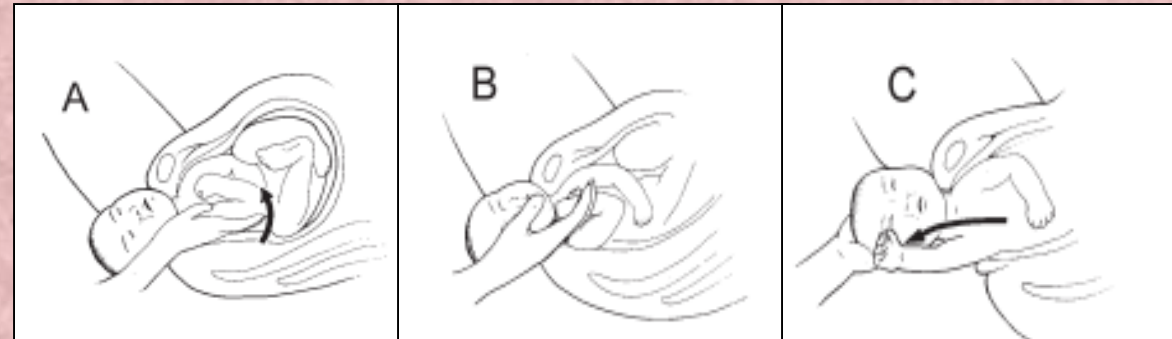
Lift the buttocks, legs



Anterior dis impaction



Rotate the posterior shoulder



Manual removal of posterior arm

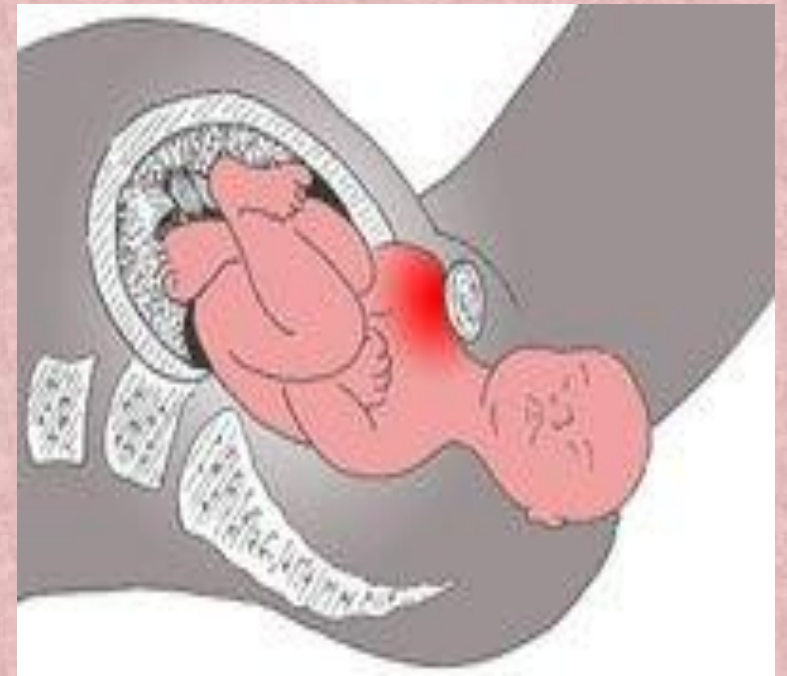
Episiotomy

Roll over



Shoulder dystocia

- Anticipation, counselling, consent
- Early diagnosis
- Prompt and appropriate management
- Communication , documentation



Breech- BRUSH ASIDE

B-Breech on perineum

R - Rotate thighs, flex knees

- **U –Umbilicus visible**
- S - Sacrum anterior**
- **H – Hold on!**
- **A – Avoid traction/stimulation/soft tissue injury**
- **S - Scapulae visible**
- **I - Initiate arm rotation to anterior**
- **D - Deliver the head**
- **E – Explain and document**

Breech Delivery

Breech on perineum

Rotate thighs, flex knees

Umbilicus

Sacrum anterior

Hold on!

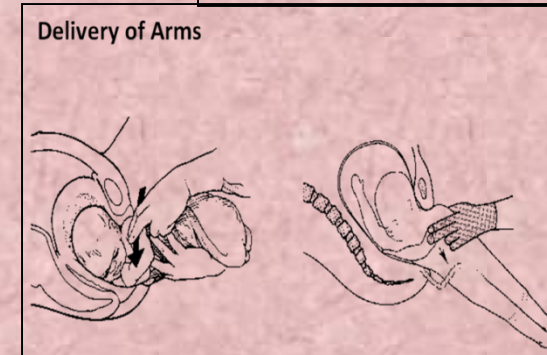
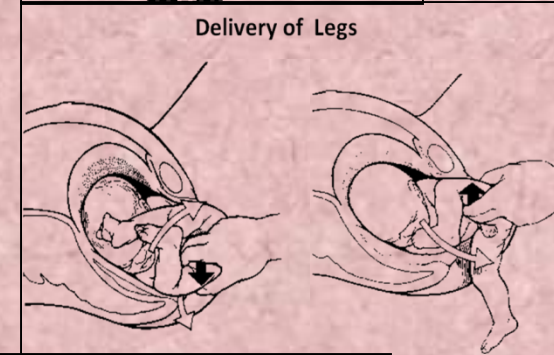
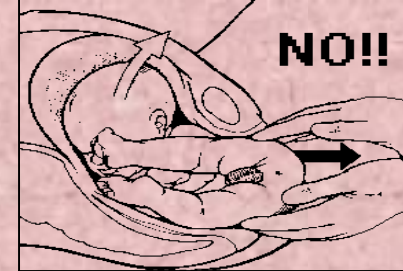
Avoid traction / stimulation / soft tissue injury

Scapulae visible

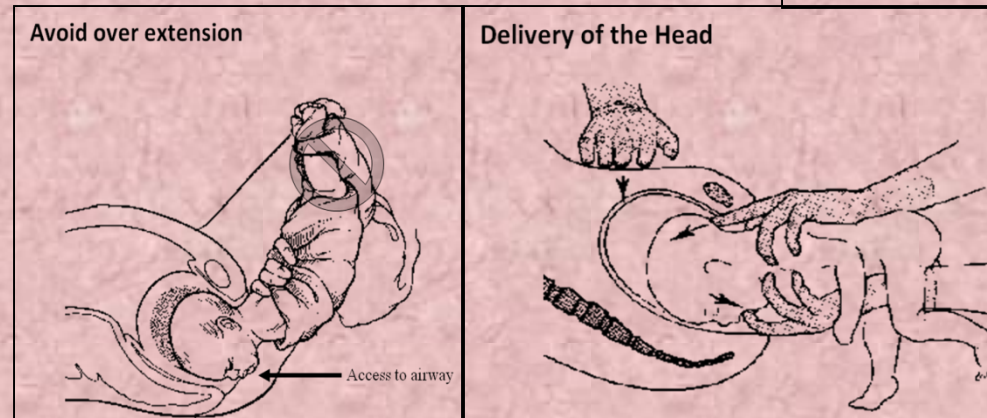
Initiate arm rotation to anterior

Deliver the head

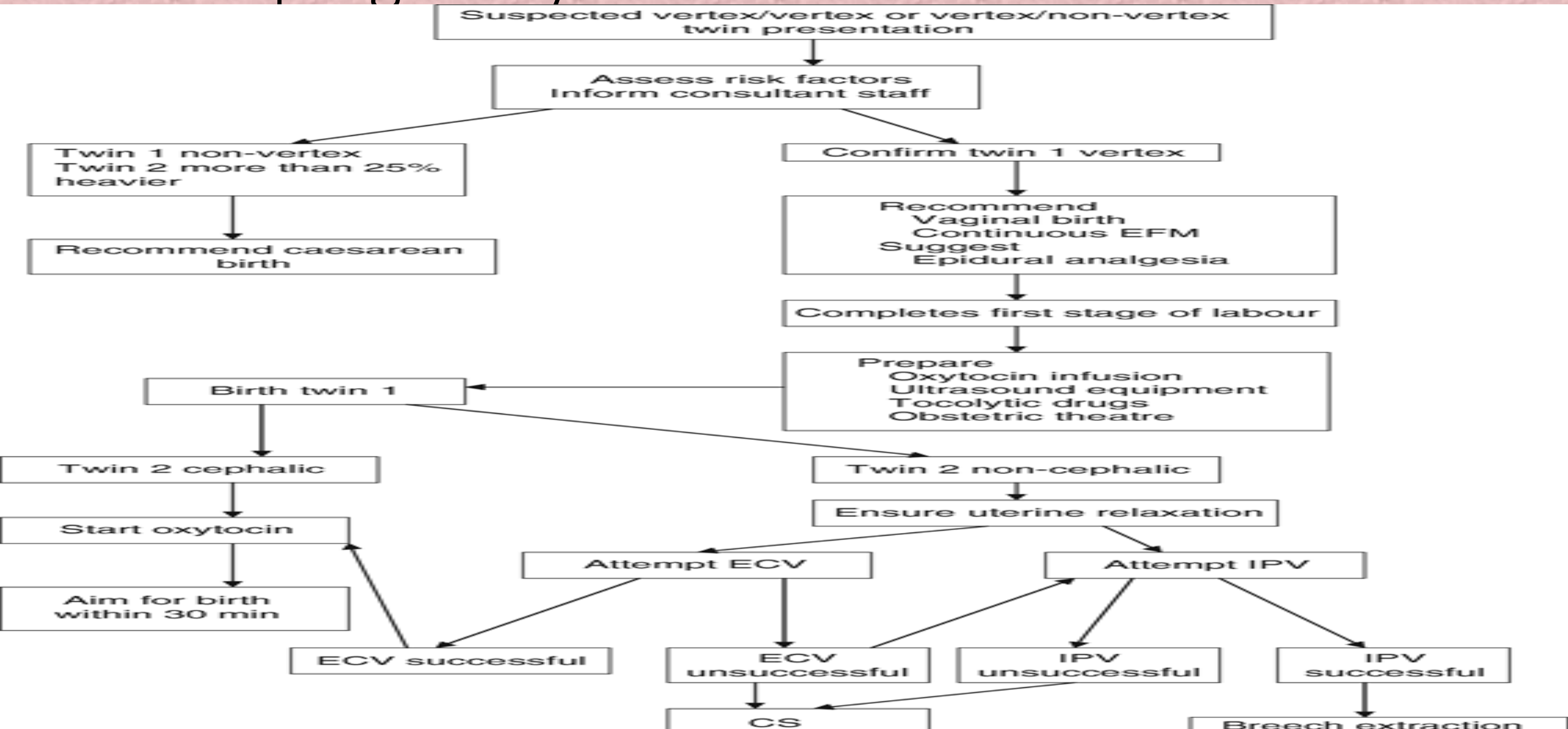
Explain & document



Delivery notes



Twin pregnancy



How to manage difficult births??

- Annual skill drills
- Team Approach
 - Formalized activation system
 - Good leadership
 - Good organisation of well trained team members
- Simulation training improves overall performance and helps in the timeliness of manoeuvres

Take home message



- Good antenatal care
- Anticipate problems
- Counselling and good communication
- Skill drill and training
- Algorithms and checklists
- Team approach
- Documentation